
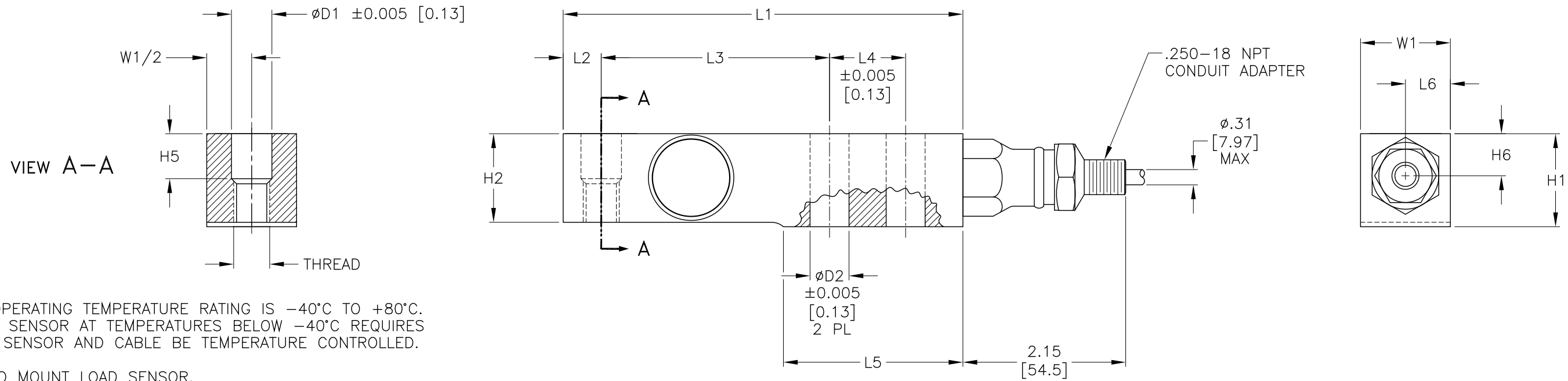


**DIMENSIONS— INCHES & [mm]**

REV.	ECO/DDC	DESCRIPTION	DATE	DRAFT	CHECK	APV'D
A	----	RELEASED FOR PRODUCTION.	04-13-16	V.J.C.	E.J.	V.J.C.

CAPACITY LBS [KN]	MODEL NUMBER	L1	L2	L3	L4	L5	L6	H1	H2	H5	H6	W1	ØD2	THREAD	MOUNTING BOLT 	TORQUE LB-FT [NM]
500 LB [227KG]	HI SBHC14-500	5.25 [133.4]	0.50 [12.7]	3.00 [76.2]	1.00 [25.4]	2.36 [59.9]	0.59 [15.0]	1.22 [31.0]	1.13 [28.8]	0.59 [15.0]	0.59 [15.0]	1.181±0.003 [30.0±.08]	0.51 [13.0]	.500-20 UNF-2B	.500-20 UNF GRADE 5 [M12 8.8]	66 [90]
1 KLB [454KG]	HI SBHC14-1K	5.25 [133.4]	0.50 [12.7]	3.00 [76.2]	1.00 [25.4]	2.36 [59.9]	0.59 [15.0]	1.22 [31.0]	1.13 [28.8]	0.59 [15.0]	0.59 [15.0]	1.181±0.003 [30.0±.08]	0.51 [13.0]	.500-20 UNF-2B	.500-20 UNF GRADE 5 [M12 8.8]	66 [90]
2.5 KLB [1.13MT]	HI SBHC14-2.5K	5.25 [133.4]	0.50 [12.7]	3.00 [76.2]	1.00 [25.4]	2.36 [59.9]	0.59 [15.0]	1.22 [31.0]	1.20 [30.5]	0.59 [15.0]	0.59 [15.0]	1.181±0.003 [30.0±.08]	0.51 [13.0]	.500-20 UNF-2B	.500-20 UNF GRADE 5 [M12 8.8]	66 [90]
5 KLB [2.27MT]	HI SBHC14-5K	5.25 [133.4]	0.50 [12.7]	3.00 [76.2]	1.00 [25.4]	2.36 [59.9]	0.59 [15.0]	1.22 [31.0]	1.20 [30.5]	0.59 [15.0]	0.59 [15.0]	1.181±0.003 [30.0±.08]	0.51 [13.0]	.500-20 UNF-2B	.500-20 UNF GRADE 5 [M12 8.8]	89 [120]

TOLERANCES: ±0.015 [0.38] UNLESS OTHERWISE STATED



8. LOAD SENSOR OPERATING TEMPERATURE RATING IS -40°C TO +80°C. USAGE OF LOAD SENSOR AT TEMPERATURES BELOW -40°C REQUIRES THAT THE LOAD SENSOR AND CABLE BE TEMPERATURE CONTROLLED.

 USE 2 BOLTS TO MOUNT LOAD SENSOR.

6. LOAD SENSOR IS CONSTRUCTED USING 17-4 PH STAINLESS STEEL.

5. CABLE IS SHIELDED, 6 CONDUCTOR. CABLE SHIELD IS FLOATING. CABLE LENGTH IS 20 FEET [6 METERS].

4. C2 WIRE COLOR CODE FLAG LABEL IS LOCATED APPROXIMATELY 10 INCHES [254MM] FROM END OF CABLE.

EXCITATION +	RED
EXCITATION -	BLACK
SIGNAL +	GREEN
SIGNAL -	WHITE
C2 +	GRAY
C2 -	VIOLET
SHIELD	YELLOW

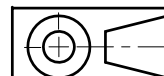
3. CABLE WIRE ENDS ARE STRIPPED BACK APPROXIMATELY 0.5 INCHES [12.7MM] AND TINNED. CABLE JACKET IS STRIPPED BACK 5 INCHES [127MM] MAXIMUM.


2. THIS DRAWING IS SUBJECT TO CHANGE WITHOUT NOTICE.

1. RATED OUTPUT: 2mV/V ±0.002.

**NOTES: UNLESS OTHERWISE SPECIFIED**

**PROPRIETARY NOTICE**  
ALL DATA AND INFORMATION CONTAINED IN OR DISCLOSED BY THIS DOCUMENT IS CONFIDENTIAL AND PROPRIETARY INFORMATION OF HARDY PROCESS SOLUTIONS INC. AND ALL RIGHTS THEREIN ARE EXPRESSLY RESERVED. BY ACCEPTING THIS MATERIAL THE RECIPIENT AGREES THAT THIS MATERIAL AND THE INFORMATION CONTAINED THEREIN IS HELD IN CONFIDENCE AND IN TRUST AND SHALL NOT BE USED, COPIED, REPRODUCED IN WHOLE OR IN PART, NOR ITS CONTENTS REVEALED IN ANY MANNER TO OTHERS, EXCEPT TO MEET THE SPECIFIC PURPOSE FOR WHICH IT WAS DELIVERED.



		0588-0178	OUTLINE DRAWING, LOAD SENSOR, HI SBHC14 SERIES		
ITEM	QTY	PART NUMBER	DESCRIPTION	COMMENTS	
<b>PARTS LIST</b>					
UNLESS OTHERWISE SPECIFIED DIMENSIONS ARE IN INCHES TOLERANCES ARE: FRACTIONS: N/A DECIMALS: .XX AND .XXX = ±.010 ANGLES: ±0°, 30'		CONTRACT NO.		 <b>OUTLINE DRAWING, LOAD SENSOR, HI SBHC14 SERIES</b>	
		APPROVALS			
		DRAWN V. CHULA	DATE 03-11-16		
		CHECKED E. JAMES	DATE 04-13-16		
MATERIAL		APPROVED V. CHULA	DATE 04-13-16	TITLE	
FINISH		ISSUED V. CHULA	DATE 04-13-16	SIZE D	FSCM 21316
DO NOT SCALE DRAWING		PRODUCTION	DATE	DRAWING NO. 0588-0178	REV. A
		FILE NAME: 588178A1.DWG	SCALE: NONE	SHEET 1 OF 1	